

**ESKILSTUNA**  
**RNP RWY 18**

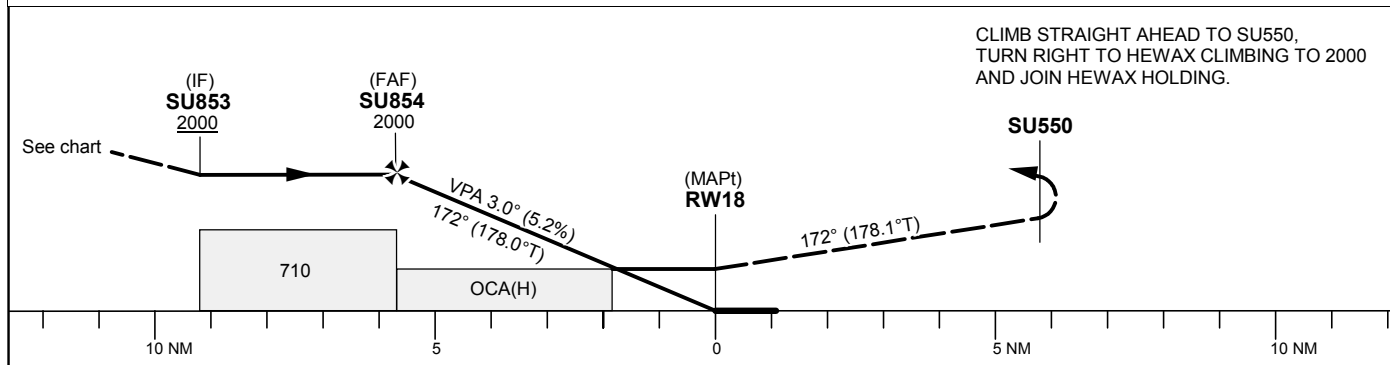
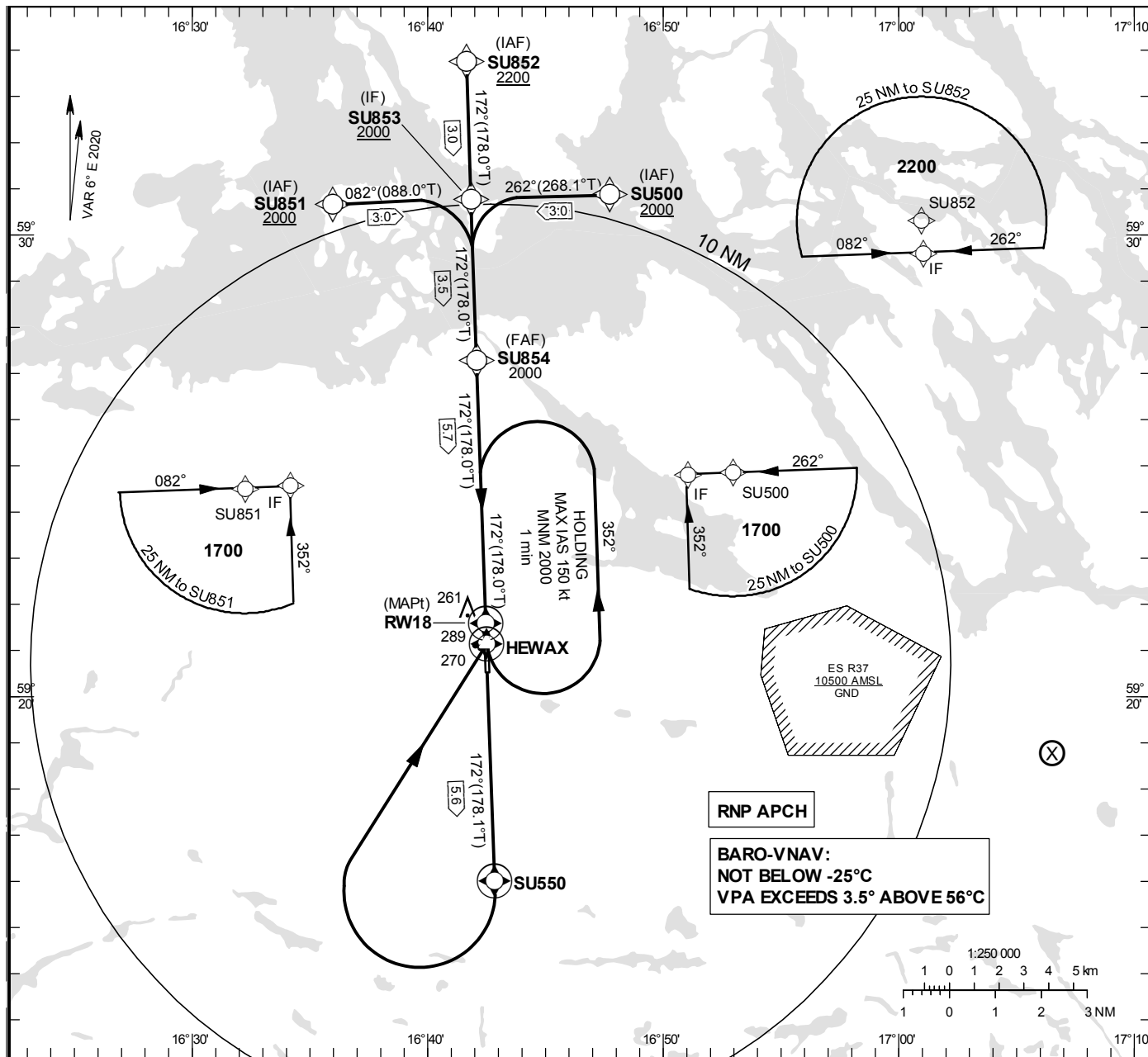
**INSTRUMENT  
APPROACH  
CHART – ICAO**

**THR ELEV 129 ft, AD ELEV 140 ft**  
OCH are related to THR.  
BRG are MAG (True).  
ALT, HGT and ELEV in ft.

ESKILSTUNA  
INFORMATION

126.855

EGNOS Ch 73289 E 18A



OCA (H)			Final approach	Distance FAF-MAPt 5.7 NM							
Cat of ACFT	A	B	Dist to RW18	5		4		3		2	
LPV	419(290)	431(302)	ALT	1770		1450		1130		820	
LNAV/VNAV	400(270)	420(290)	GS	kt	70	80	90	100	110	120	130
LNAV	510(380)		Rate of descent	ft/min	370	425	480	530	585	635	690

**ESKILSTUNA****RNP RWY 18 via SU851**

Path Desc	Waypoint Identifier	Fly-over	Course °M(°T)	Dist (NM)	Turn Dir	Altitude	Speed	VPA/ RDH	Rec Navaid	Navigation Specification
IF	SU851	-	-	-	-	+2000	-	-	-	RNP APCH
TF	SU853	-	082°(088.0°)	3.0	-	+2000	-	-	-	RNP APCH

**RNP RWY 18 via SU500**

Path Desc	Waypoint Identifier	Fly-over	Course °M(°T)	Dist (NM)	Turn Dir	Altitude	Speed	VPA/ RDH	Rec Navaid	Navigation Specification
IF	SU500	-	-	-	-	+2000	-	-	-	RNP APCH
TF	SU853	-	262°(268.1°)	3.0	-	+2000	-	-	-	RNP APCH

**RNP RWY 18 via SU852**

Path Desc	Waypoint Identifier	Fly-over	Course °M(°T)	Dist (NM)	Turn Dir	Altitude	Speed	VPA/ RDH	Rec Navaid	Navigation Specification
IF	SU852	-	-	-	-	+2200	-	-	-	RNP APCH
TF	SU853	-	172°(178.0°)	3.0	-	+2000	-	-	-	RNP APCH

Path Desc	Waypoint Identifier	Fly-over	Course °M(°T)	Dist (NM)	Turn Dir	Altitude	Speed	VPA/ RDH	Rec Navaid	Navigation Specification
IF	SU853	-	-	-	-	+2000	-	-	-	RNP APCH
TF	SU854	-	172°(178.0°)	3.5	-	@2000	-	-	-	RNP APCH
TF	RW18	Y	172°(178.0°)	5.7	-	@179	-	-3.0/50	-	RNP APCH
TF	SU550	Y	172°(178.1°)	5.6	-	-	-	-	-	RNP APCH
DF	HEWAX	Y	-	-	R	-	-	-	-	RNP APCH

**ESSU Holding HEWAX**

Path Desc	Waypoint Identifier	Fly-over	Course °M(°T)	Dist (NM)	Turn Dir	Altitude	Speed	VPA/ RDH	Rec Navaid	Navigation Specification
HM	HEWAX	Y	172°(178.0°)	-	L	+2000	-150	-	-	RNP 1

## FAS Data Block

## RNP RWY 18

## Input data

Operation Type	0
SBAS Provider	1 (EGNOS)
Airport Identifier	ESSU
Runway	18
Runway Letter	0 (None)
Approach Performance Designator	0
Route Indicator	
Reference Path Data Selector	0
Reference Path Identifier	E18A
LTP/FTP Latitude	592134.3390N
LTP/FTP Longitude	0164228.2135E
LTP/FTP Ellipsoidal Height (metres)	65.0
FPAP Latitude	592033.4240N
Delta FPAP Latitude (seconds)	-60.9150
FPAP Longitude	0164232.2805E
Delta FPAP Longitude (seconds)	4.0670
Threshold Crossing Height	50.0
TCH Units Selector	0 (feet)
Glidepath Angle (degrees)	3.00
Course Width (metres)	105.00
Length Offset (metres)	0
HAL (metres)	40.0
VAL (metres)	50.0

## Output data

Data Block	10 15 13 13 05 12 00 00 01 38 31 05 06 6F 79 19 EB 93 2B 07 8A 16 1A 24 FE C6 1F 00 F4 01 2C 01 64 00 C8 FA 70 B5 18 92
Calculated CRC Value	70B51892
Supplied CRC Value	70B51892
Comparison Result	OK

## Required Additional Data

ICAO Code	ES
LTP/FTP Orthometric Height (metres)	39.4